

Extreme Undercover

- RED** ----- To +VDC (fuse@ 2A)
- BLACK** ----- To chassis ground
- BLUE** ----- For pattern advance and sync
- WHITE** ----- For dim function
- GREEN** ----- For steady burn function
- YELLOW** ----- To +VDC (fuse@ 2A) for second color
(Only dual color lighthouse has yellow wire)



Model	Single Color	Dual Color
Color		
LED Diode	4	2+2 interweave
Max. Current	1.3A @ 12 VDC 0.65A @ 24 VDC	1.3A @ 12 VDC 0.65A @ 24 VDC
Voltage	12 ~ 24 VDC	
Operating Tem.	-30 ~ 50°C	
Accessories	M4x16mm screw*2, M3x6mm screws*2, mount ear*2, rubber grommet, operation manual	

FLASH PATTERN	
1	Single 120 (R65)
2	Double 120 (R65)
3	Single (SAE)
4	Double (SAE)
5	Quad (SAE)
6	Single fast
7	Double fast
8	Quad fast
9	Quad fast continue
10	Combo 1
11	Combo 2
12	Breathing
13	Random
14	Steady burn

For dual color lighthouse flashing :

- Apply **RED** and **YELLOW** wire to +VDC together, two colors will flash alternatively.
- Two colors and dual color can be set to different flash and directional pattern.

For flash pattern :

- Momentarily apply **BLUE** wire to +VDC, the flash pattern will advance to next one.
- Apply **BLUE** wire to +VDC for 3~5 seconds, the flash pattern will reset to pattern 1.

For synchronization :

- Connect **BLUE** wire of all lighthoods together. All lighthoods should be set at the same flash pattern.

For simultaneous or alternative flash :

- Apply **BLUE** wire to +VDC for 7 seconds to enter grouping mode.
 - 2 LED flash - Group 1 (momentarily apply **BLUE** wire to +VDC to change group)
 - 4 LED flash - Group 2
- Lighthoods in the same group flash simultaneously.
- Lighthoods in different group flash alternatively.
- Turn off the power to save and exit the grouping mode, the flash pattern will reset to pattern 1.

For dim function :

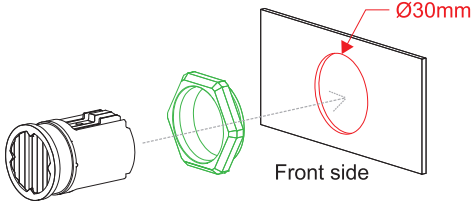
- Apply **WHITE** wire to +VDC, the light intensity will decrease to 60% for night time driving.

For steady burn function :

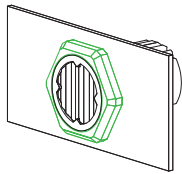
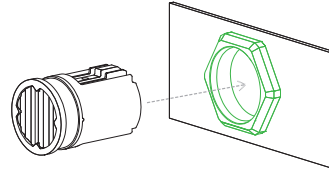
- Apply **GREEN** wire to +VDC, steady burn pattern will initiate and override original flash pattern.

Installation : Flush Mount

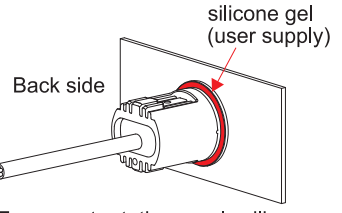
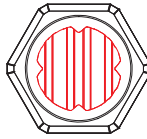
- 1 Drill an 1-3/16"(30mm) cut-out.



- 2 Install the GROMMET from the front.



- 3 4 To meet regulation, the optical stripes must aligned vertically.

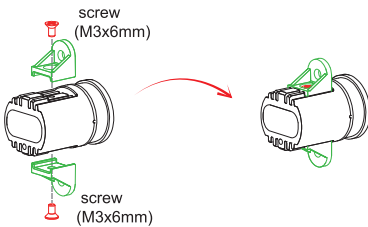


- 3 Insert the LIGHT into GROMMET.

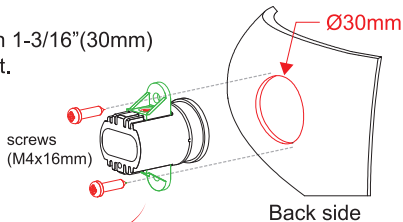
- 5 To prevent rotation, apply silicone gel around the reverse side if possible.

Installation : Screw Mount

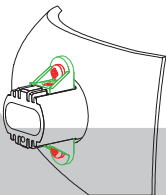
- 1 Secure the MOUNT EARS onto the LIGHT with screws.



- 2 Drill an 1-3/16"(30mm) cut-out.

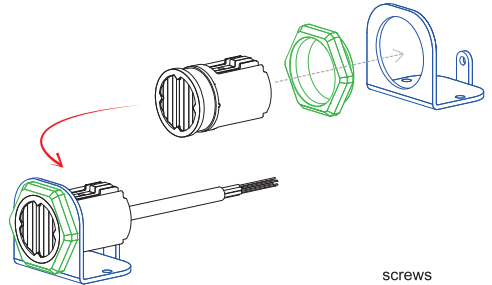


- 4 Secure the LIGHT onto target surface with screws.



Installation : Bracket Mount

- 1 Install the GROMMET on the BRACKET from the front, and insert the LIGHT.



- 3 Secure the LIGHT with a screw, and secure the BRACKET onto surface with screws.

